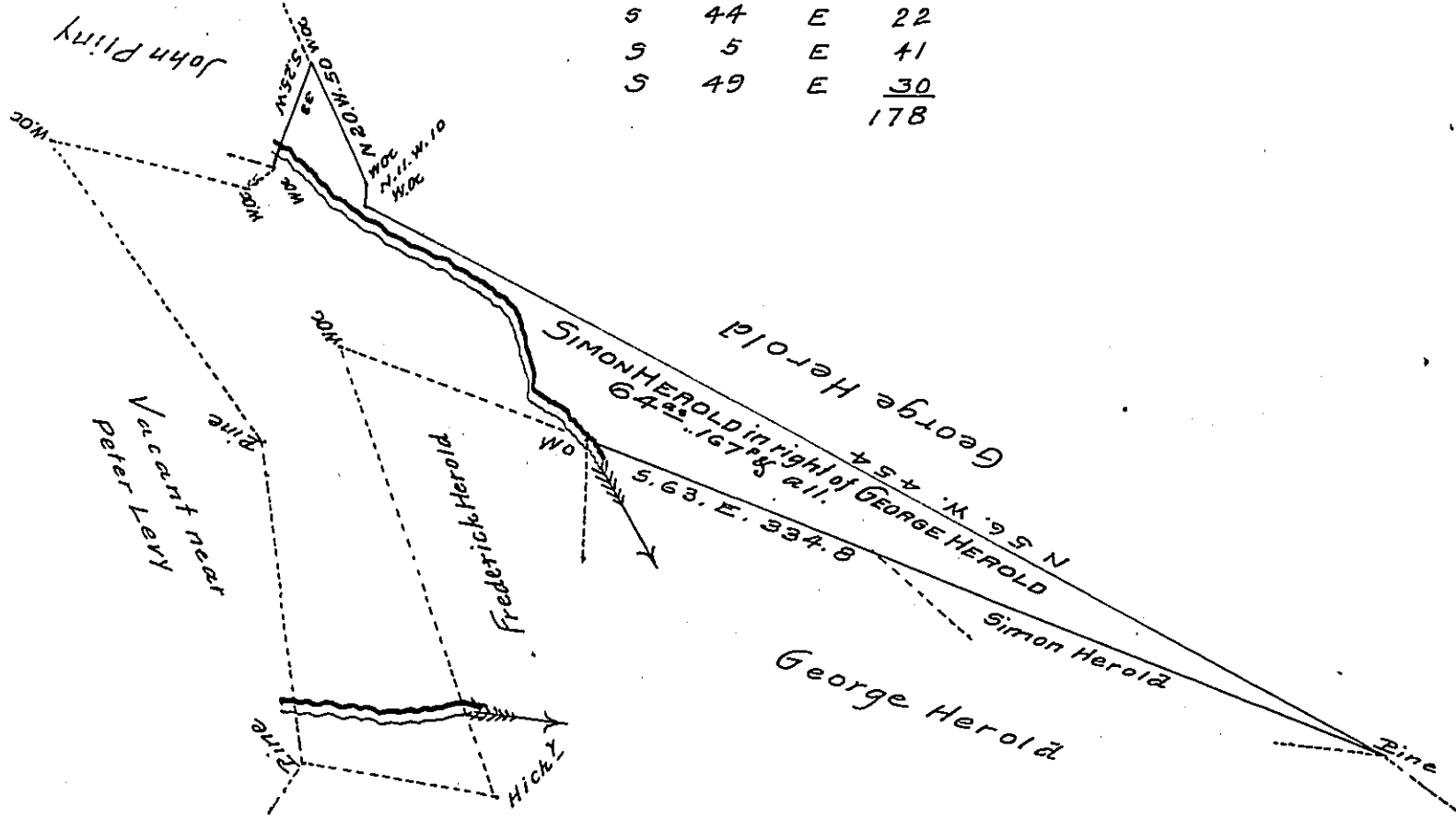


FORM NO 1.

Courses and distances
down the Run

| | | | |
|---|----|---|-----|
| S | 43 | E | 40 |
| S | 59 | E | 45 |
| S | 44 | E | 22 |
| S | 5 | E | 41 |
| S | 49 | E | 30 |
| | | | 178 |



A Draught of a Tract of Land called _____ situate formerly in Penns
Township Northumberland County, now this part in Mahontongo township
Union County containing Sixty four acres and One hundred and sixty
seven perches and the usual allowance of six per Cent for roads &c.
Surveyed the Sixteenth day of September A.D. One thousand eight hundred
and seventeen for Simon Herold being part of a larger tract of land which
was surveyed for George Herold in pursuance of his Warrant bearing
date the twenty ninth day of July A.D. One thousand seven hundred and
eighty five containing Two hundred and Nine acres & the allowance &c.

Done - Simon Fryder Junr D.S.

To Richard T. Leech Esquire
Surveyor General of Pennsylvania

IN TESTIMONY that the above is a copy of the original remaining on file in
the Department of Internal Affairs of Pennsylvania, made
conformably to an Act of Assembly approved the 16th day of
February, 1833, I have hereunto set my Hand and caused
the Seal of said Department to be affixed at Harrisburg,
this eleventh day of February 1908

Henry Horck
Secretary of Internal Affairs.